

## ENVIRONMENTAL PRODUCT DECLARATION

# LASER PRINTER B3442DW

According to ISO 14025



With output up to 40 [38] pages per minute\* and a light, compact form factor, the Lexmark B3340dw provides fast, dependable performance in a package that fits almost anywhere. Connect via Wi-Fi, USB or Ethernet and power through big jobs with a 1-GHz multi-core processor, 256 MB of memory and a 100-sheet multipurpose feeder. Available High Yield Unison™ toner offers up to 3,000 pages of output\*\*, and optional 550-sheet paper tray supports longer print runs. A steel frame drives durability and long-life reliability, while standard two-sided printing saves paper, the lifetime fuser minimizes maintenance, and Lexmark full-spectrum security helps protect your network and proprietary information.



Lexmark's innovative imaging solutions and technologies help customers worldwide print, secure and manage information with ease, efficiency and unmatched value. Lexmark simplifies the complex intersection of digital and printed information.

As part of the commitment to our customers, Lexmark performs Life Cycle Analysis on our products. The results of the LCA analysis continues to assist Lexmark in reducing the environmental impact of the hardware, software and services offered to our customers.



# ENVIRONMENTAL PRODUCT DECLARATION



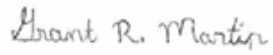
Laser Printer B3442dw  
Printers and multi-functional printing units

According to ISO 14025

This declaration is an environmental product declaration (EPD) in accordance with ISO 14025. EPDs rely on Life Cycle Assessment (LCA) to provide information on a number of environmental impacts of products over their life cycle. Exclusions: EPDs do not indicate that any environmental or social performance benchmarks are met, and there may be impacts that they do not encompass. LCAs do not typically address the site-specific environmental impacts of raw material extraction, nor are they meant to assess human health toxicity.



EPDs can complement but cannot replace tools and certifications that are designed to address these impacts and/or set performance thresholds – e.g. Type 1 certifications, health assessments and declarations, environmental impact assessments, etc. Accuracy of Results: EPDs regularly rely on estimations of impacts, and the level of accuracy in estimation of effect differs for any particular product line and reported impact. Comparability: EPDs are not comparative assertions and are either not comparable or have limited comparability when they cover different life cycle stages, are based on different product category rules or are missing relevant environmental impacts. EPDs from different programs may not be comparable.

PROGRAM OPERATOR	UL Environment	
DECLARATION HOLDER	Lexmark	
DECLARATION NUMBER	4789423221.103.1	
DECLARED PRODUCT	Laser Printer B3442dw	
REFERENCE PCR	ULE (2018) Product Category Rules for preparing an environmental product declaration for printers and multi-function printing units (v2.0). UL Environment. April 23, 2018	
DATE OF ISSUE	April 1, 2020	
PERIOD OF VALIDITY	5 Years	
CONTENTS OF THE DECLARATION	Product definition Information about basic material and the material's origin Description of the product's manufacture Indication of product processing Information about the in-use conditions Life cycle assessment results Testing results and verifications	
The PCR review was conducted by:	UL Environment Review Panel	
	Lise Laurin (Chairperson)	
	lise@earthshift.com	
This declaration was independently verified in accordance with ISO 14025 by Underwriters Laboratories <input type="checkbox"/> INTERNAL <input checked="" type="checkbox"/> EXTERNAL		
	Grant R. Martin, UL Environment	
This life cycle assessment was independently verified in accordance with ISO 14044 and the reference PCR by:		
	Thomas P. Gloria, Industrial Ecology Consultants	

# ENVIRONMENTAL PRODUCT DECLARATION



Lexmark™

Laser Printer B3442dw

Printers and multi-functional printing units

According to ISO 14025

## Product Description

<b>Product Type</b>	Mono Laser Printer
<b>Printer Model</b>	B3442dw
<b>Maximum Print Speed</b>	42 pages per minute
<b>Intended use</b>	primarily office
<b>Range of applications</b>	print images or text in mono onto paper or paper-like media
<b>Product Lifetime</b>	5 years
<b>Introduction Date</b>	4/14/2020
<b>Product Specifications</b>	<a href="http://www.lexmark.com/en_US/products/series/printer-and-multifunction/finder.shtml">http://www.lexmark.com/en_US/products/series/printer-and-multifunction/finder.shtml</a>
<b>Functional Unit</b>	The functional unit has been defined as a 1,000 page simplex job in accordance with the Energy Star Typical Energy Consumption test procedure and the reference Product Category Rule (PCR).
<b>Scope of Validity / Applicability</b>	The EPD is representative for the printer model B3442dw sold as a stand-alone unit. This EPD and the reference PCR are applicable for printer sale and use in the North American market. Lexmark cannot guarantee that comparisons with EPDs of competitive products will be valid.
<b>Product Characterization</b>	Light, compact, and fast, the B3442dw supports output up to 42 [40] pages per minute* with wired and wireless connectivity. Available Extra High Yield Unison™ toner prints up to 6,000 pages** and optional 550-sheet tray support longer print runs. A 1-GHz multi-core processor powers through big jobs, while Lexmark full-spectrum security helps protect sensitive information. The printer product delivered to the customer consists of the printer, a power cord, printed setup instructions, a CD/DVD that includes the User Guide and Printer Drivers and an initial set of product supplies. The printer is delivered in packaging that can be recycled locally and is not needed for product operation. Product supplies include toner cartridges, imaging kits and the fusing mechanism. The power supply is internal to the product and the imaging kit and fusing mechanism are installed at the factory. Only the toner cartridges must be installed by the customer. The printer can be setup by the customer without outside assistance.

# ENVIRONMENTAL PRODUCT DECLARATION



Laser Printer B3442dw  
Printers and multi-functional printing units

According to ISO 14025

## Technical Data

Product Specifications		Lexmark B3442dw
<b>Printing</b>		
Display	2-line All Points Addressable (APA) monochrome LCD display	
Print Speed	Up to: Black: 42 ppm <sup>1</sup> (Letter)	
Time to First Page	As fast as: Black: 5.9 seconds	
Print Resolution	Black: 2400 Image Quality, 600 x 600 dpi	
Memory	Standard: 256 MB / Maximum: 256 MB	
Hard Disk	Not Available	
Recommended Monthly Page Volume	800 - 8000 pages <sup>2</sup>	
Maximum Monthly Duty Cycle	Up to: 80000 pages per month <sup>3</sup>	
<b>Supplies<sup>4</sup></b>		
Laser Cartridge Yields	up to: 3,000 <sup>5</sup> -page High Yield Cartridge / up to: 6,000 <sup>5</sup> -page Extra High Yield Cartridge / up to: 1,500 <sup>5</sup> -page Cartridge	
Imaging Unit Estimated Yield	Up to: 40000 pages, based on 3 average letter/A4-size pages per print job and ~ 5% coverage <sup>6</sup>	
Cartridge(s) Shipping with Product	3,000 <sup>5</sup> -page starter Return Program Toner Cartridge	
<b>Paper Handling</b>		
Included Paper Handling	100-Sheet Multipurpose Feeder, Integrated Duplex, 150-Sheet Output Bin, 250-Sheet Input	
Optional Paper Handling	550-Sheet Tray	
Paper Input Capacity	Up to: Standard: 350 pages 20 lb or 75 gsm bond / Maximum: 900 pages 20 lb or 75 gsm bond	
Paper Output Capacity	Up to: Standard: 150 pages 20 lb or 75 gsm bond / Maximum: 150 pages 20 lb or 75 gsm bond	
Media Types Supported	Paper Labels, Card Stock, Plain Paper, Envelopes, Refer to the Paper & Specialty Media Guide	
Media Sizes Supported	A6, Oficio, 7 3/4 Envelope, 9 Envelope, JIS-B5, A4, Legal, A5, Letter, B5 Envelope, Statement, C5 Envelope, Executive, Universal, DL Envelope, Folio, 10 Envelope	
<b>General Information<sup>7</sup></b>		
Standard Ports	Ethernet 10/100BaseTX (RJ-45)	
Noise Level	Operating: 53 dBA (Print)	
Specified Operating Environment	Humidity: 8 to 80% Relative Humidity / Temperature: 10 to 32°C (50 to 90°F) / Altitude: 0 - 2896 Meters (9500 Feet)	
Limited Warranty	See Statement of Limited Warranty: 1-Year Advanced Exchange, Next Business Day	
Size / Weight	H x W x D: 8.7 x 14.5 x 14.3 in. / 20.6 lb.	
ENERGY STAR Typical Electricity Consumption	TEC: 0.45 kilowatt-hours per week	

All information is subject to change without notice. Lexmark is not liable for any errors or omissions.

<sup>1</sup> Print and copy speeds measured in accordance with ISO/IEC 24734 and ISO/IEC 24735 respectively (ESAT). For more information see: [www.lexmark.com/ISOspeeds](http://www.lexmark.com/ISOspeeds).  
<sup>2</sup> "Recommended Monthly Page Volume" is a range of pages that helps customers evaluate Lexmark's product offerings based on the average number of pages customers plan to print on the device each month. Lexmark recommends that the number of pages per month be within the stated range for optimum device performance, based on factors including: supplies replacement intervals, paper loading intervals, speed, and typical customer usage. <sup>3</sup> "Maximum Monthly Duty Cycle" is defined as the maximum number of pages a device could deliver in a month using a multishift operation. This metric provides a comparison of robustness in relation to other Lexmark printers and MFPs. <sup>4</sup> Product functions only with replacement cartridges designed for use in a specific geographical region. See [www.lexmark.com/regions](http://www.lexmark.com/regions) for more details. <sup>5</sup> Average standard page yield value declared in accordance with ISO/IEC 19752. <sup>6</sup> Actual Yield may vary based on other factors such as device speed, paper size and feed orientation, toner coverage, tray source, percentage of black-only printing and average print job complexity. <sup>7</sup> Printers are sold subject to certain license/agreement conditions. See [www.lexmark.com/printerlicense](http://www.lexmark.com/printerlicense) for details.

# ENVIRONMENTAL PRODUCT DECLARATION



Laser Printer B3442dw  
Printers and multi-functional printing units

According to ISO 14025

## System Boundary

The study considers all phases of the life cycle, as shown below.

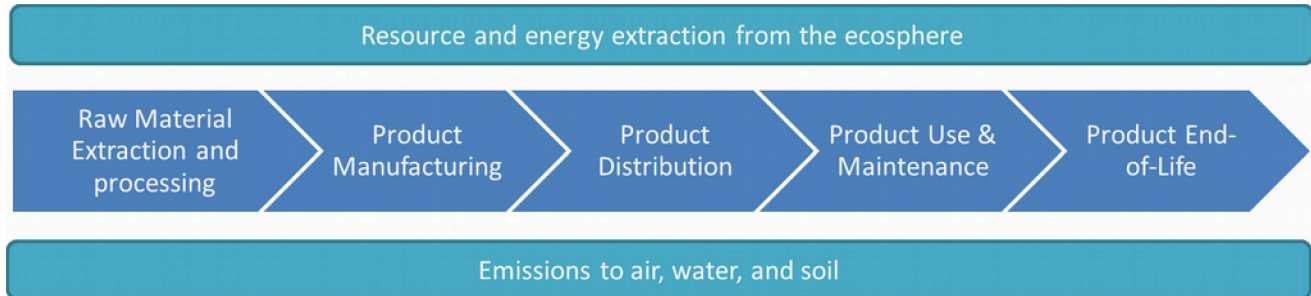


Figure 1: System Boundaries

## Declaration of Basic Materials

The printer consist of mechanical, electromechanical, and electronic components. Its material composition can be described using the basic material fractions given below. Please note that the category 'Electronics' also includes all wiring.

Material	Mass (kg)
Plastics (recyclable)	4.01
Plastics (non-recyclable)	0.714
Ferrous Metals	4.02
Aluminum	0.018
Copper	0
Glass	0
Electronics	0.875
Other Materials	0.0347

Table 1: Basic Material Declaration

## Product Supply Chain

The printer is manufactured and assembled in Southeast China. The cartridges for the North American market are manufactured and assembled in Juarez, Mexico.

# ENVIRONMENTAL PRODUCT DECLARATION



Laser Printer B3442dw

Printers and multi-functional printing units

According to ISO 14025

## Life Cycle Assessment Results

The following sections describe the printer's potential environmental impacts over the full printer life cycle. These represent the typical impacts for an average system sold in the North American market. All impacts are presented per functional unit of printing 1,000 images of the reference standard.

### Manufacturing Material and Resources Inventory

Table 2 displays the use of material resources (kg) and of non-renewable as well as renewable primary energy demand necessary for printer manufacturing, but excludes other life cycle stages of the printer (cradle-to-gate). Likewise, material and energy consumption associated with printer packaging, cartridges, and paper is excluded here.

Use of Material Resources [kg]	
Non-Renewable	783
Renewable (excl. water)	594
Water	6.09E004
Use of Non-Renewable Primary Energy [MJ]	
Crude Oil	235
Hard Coal	481
Lignite	21.9
Natural Gas	377
Uranium	55.6
Use of Renewable Primary Energy [MJ]	
Biomass	-4.35E-007
Geothermal	1.06
Solar	46.6
Wind	22.5
Hydropower	42.8

Table 2: Use of Material and Energy Resources for Printer Manufacturing (Cradle-to-Gate)

### Energy Consumption During Utilization

Based on the EnergyStar Typical Energy Consumption (TEC) test methodology, the printer is expected to have the following power consumption for an assumed average job load.

	Per 1,000 page	Per product lifetime
Energy Consumption During Utilization [kWh]	0.109	122

Table 3: At-wall power consumption during utilization

# ENVIRONMENTAL PRODUCT DECLARATION



Laser Printer B3442dw

Printers and multi-functional printing units

According to ISO 14025

## Life Cycle Impact Assessment

The following provides an overview of the potential printer life cycle impacts with emissions classified and characterized to standard environmental impact metrics using the ReCiPe 2016 Hierarchist (H) midpoint characterization factors (v1.1).

Note that the mineral resource depletion results do not include any contributions from the paper life cycle as the AF&PA report does not allow for the conversion to ReCiPe 2016.

Ecotoxicity and human health are not included in this study, as per the PCR, due to their respective uncertainties.

LCIA results are relative expressions and do not predict impacts on category endpoints, the exceeding of thresholds, safety margins or risks.

	per 1000 pages including paper	per 1000 pages excluding paper	per printer lifetime including paper	per printer lifetime excluding paper
Global Warming Potential [kg CO <sub>2</sub> eq.]	7.77E00	1.39E00	8.73E03	1.57E03
Ozone Depletion Potential [kg CFC-11 eq.]	5.40E-07	5.40E-07	6.06E-04	6.06E-04
Acidification Potential [kg SO <sub>2</sub> eq.]	2.60E-03	2.60E-03	2.93E00	2.93E00
Eutrophication Potential [kg P eq.]	1.49E-05	1.49E-05	1.67E-02	1.67E-02
Fossil Fuel Depletion Potential [kg oil eq.]	4.71E-01	4.71E-01	5.29E02	5.29E02
Mineral Resource Depletion Potential [kg Cu eq.]	6.36E-03	6.36E-03	7.14E00	7.14E00

Table 3: Summary of Life Cycle Impact Assessment Results

# ENVIRONMENTAL PRODUCT DECLARATION



Laser Printer B3442dw  
Printers and multi-functional printing units

According to ISO 14025

## Interpretation of Results

### Dominance Analysis

Due to the 5 year lifetime and the number of pages printed per day as established by the Energy Star Typical Energy Consumption test procedure, the use phase heavily dominates the life cycle impacts. The below tables and charts display the results of the dominance analysis for each impact category addressed in Table 3.

#### Global Warming Potential

	per 1000 pages including paper	per 1000 pages excluding paper	per printer lifetime including paper	per printer lifetime excluding paper
Printer	7.34E-02	7.34E-02	8.24E01	8.24E01
Lexmark use phase <LC>	7.70E00	1.32E00	8.65E03	1.48E03
Lexmark EoL phase <LC>	7.01E-04	7.01E-04	7.87E-01	7.87E-01

Table 4: Fossil GWP100 dominance analysis [kg CO2 equiv]

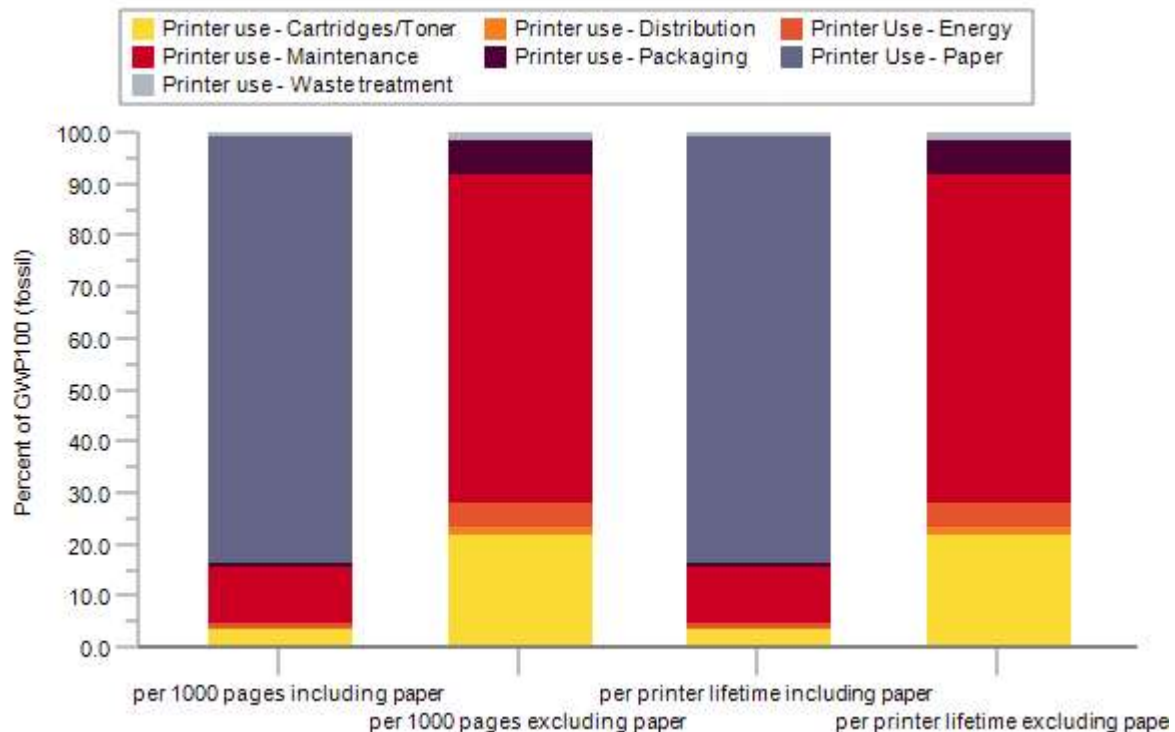


Figure 1: Fossil GWP100 dominance analysis of the use phase



# ENVIRONMENTAL PRODUCT DECLARATION



Laser Printer B3442dw

Printers and multi-functional printing units

According to ISO 14025

## Ozone Depletion Potential

	per 1000 pages including paper	per 1000 pages excluding paper	per printer lifetime including paper	per printer lifetime excluding paper
Printer	1.76E-08	1.76E-08	1.98E-05	1.98E-05
Lexmark use phase <LC>	5.22E-07	5.22E-07	5.86E-04	5.86E-04
Lexmark EoL phase <LC>	8.40E-11	8.40E-11	9.44E-08	9.44E-08

Table 5: ODP dominance analysis [kg CFC-11 equiv]

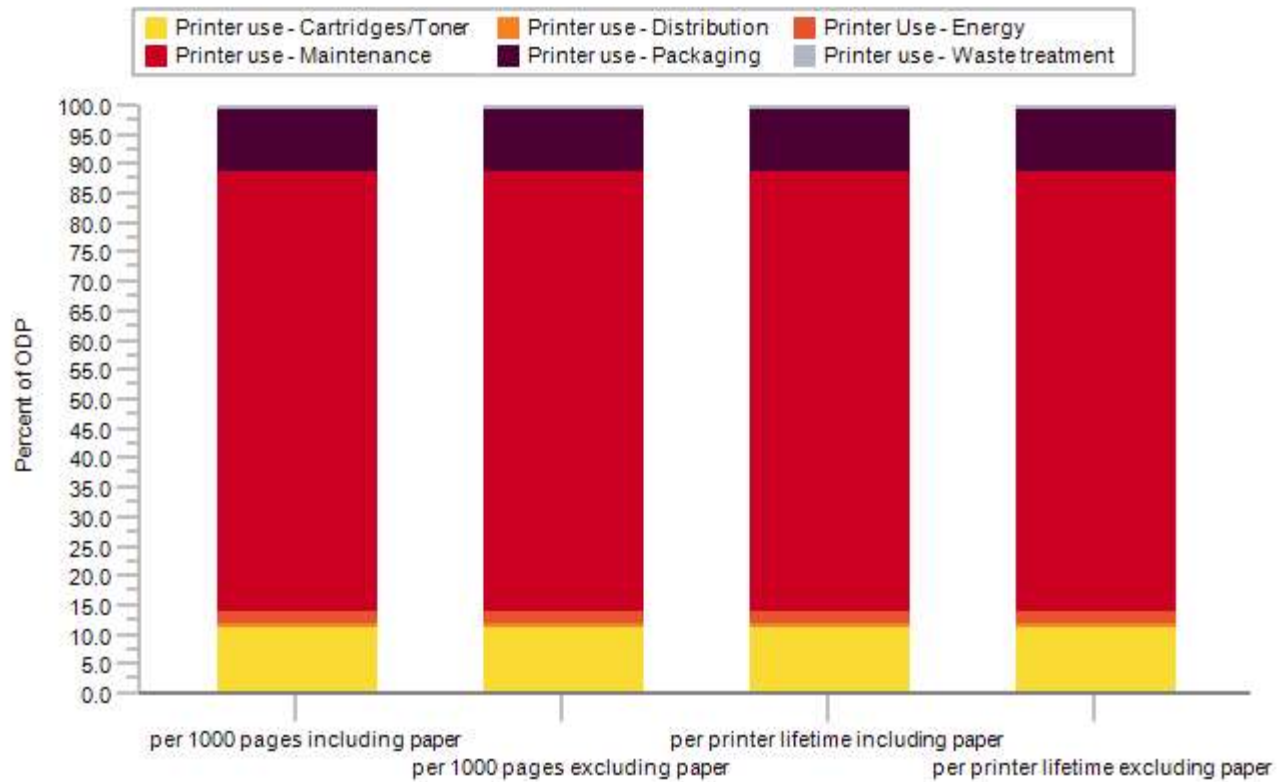


Figure 2: ODP dominance analysis of the use phase

# ENVIRONMENTAL PRODUCT DECLARATION



Laser Printer B3442dw  
Printers and multi-functional printing units

According to ISO 14025

## Acidification Potential

	per 1000 pages including paper	per 1000 pages excluding paper	per printer lifetime including paper	per printer lifetime excluding paper
Printer	3.45E-04	3.45E-04	3.87E-01	3.87E-01
Lexmark use phase <LC>	2.26E-03	2.26E-03	2.54E00	2.54E00
Lexmark EoL phase <LC>	1.78E-06	1.78E-06	2.00E-03	2.00E-03

Table 6: AP dominance analysis [kg SO<sub>2</sub> equiv]

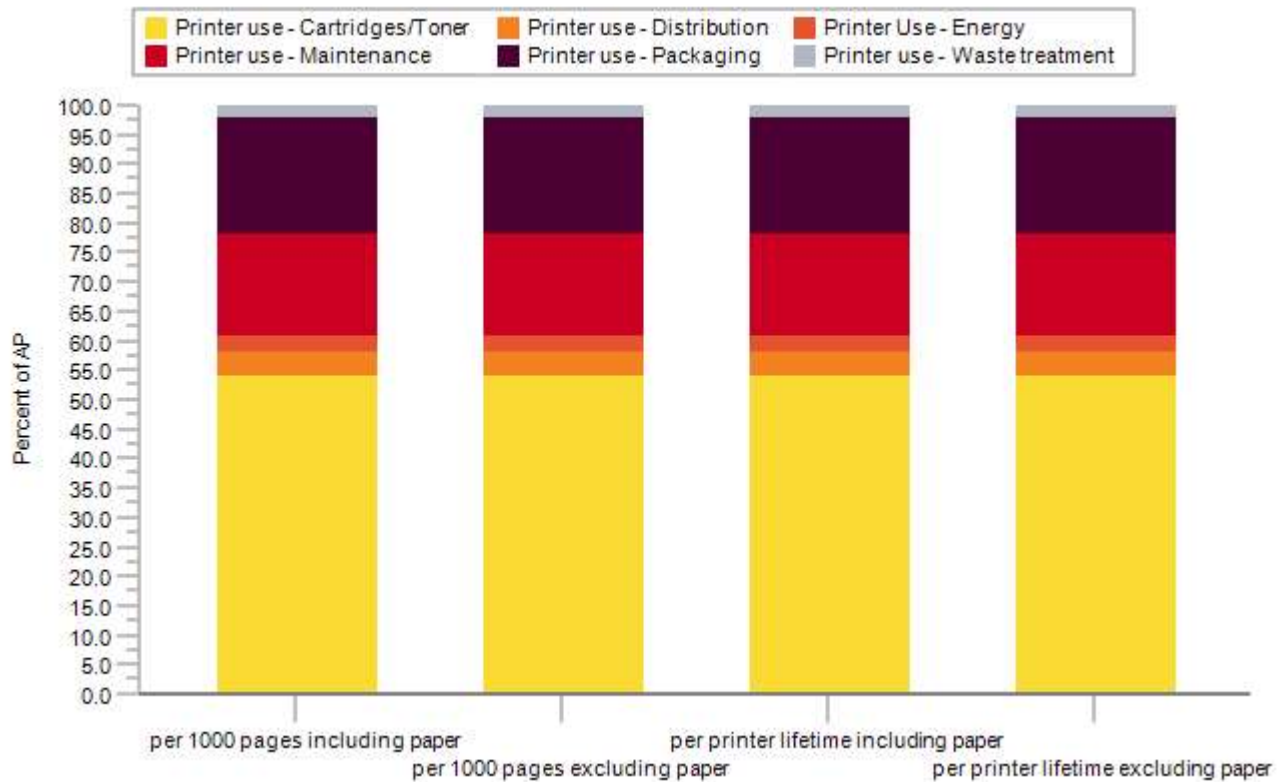


Figure 3: AP dominance analysis of the use phase

# ENVIRONMENTAL PRODUCT DECLARATION



Laser Printer B3442dw

Printers and multi-functional printing units

According to ISO 14025

## Eutrophication Potential

	per 1000 pages including paper	per 1000 pages excluding paper	per printer lifetime including paper	per printer lifetime excluding paper
Printer	2.56E-07	2.56E-07	2.88E-04	2.88E-04
Lexmark use phase <LC>	1.46E-05	1.46E-05	1.64E-02	1.64E-02
Lexmark EoL phase <LC>	3.91E-09	3.91E-09	4.39E-06	4.39E-06

Table 8: EP dominance analysis [kg P equiv]

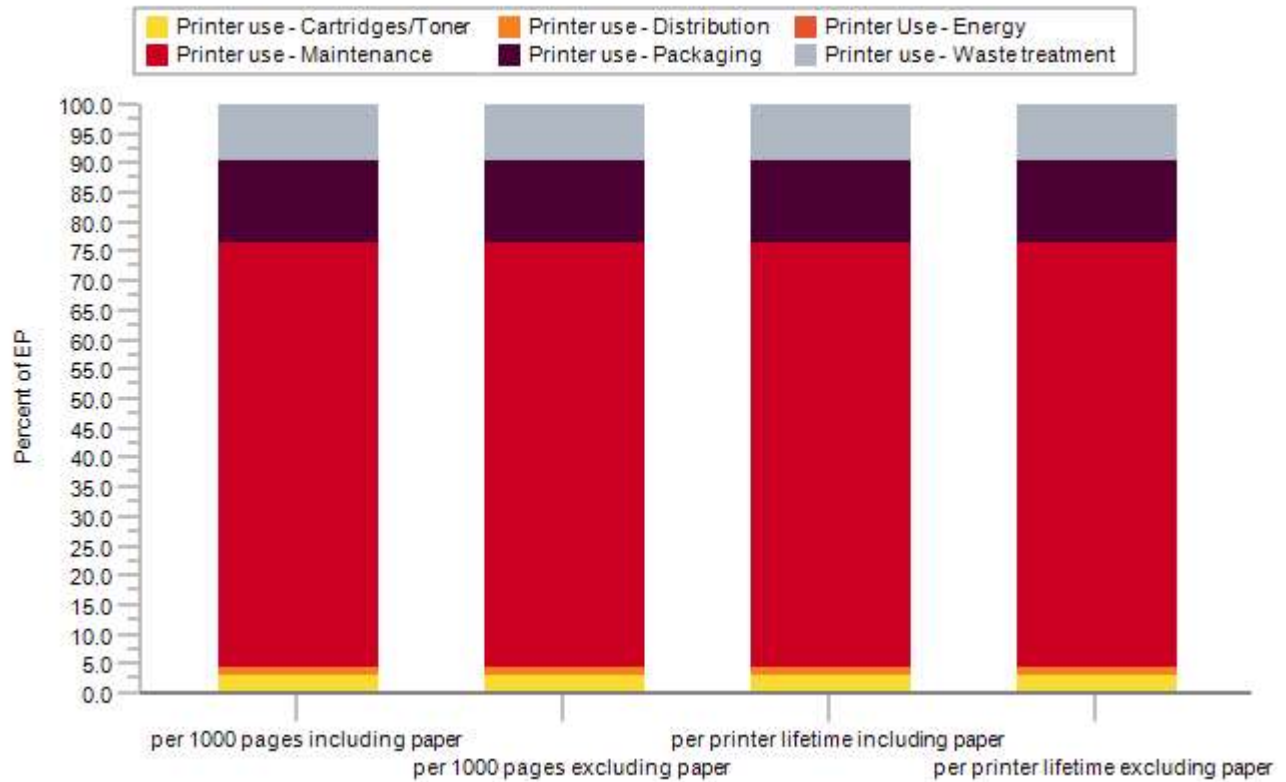


Figure 4: EP dominance analysis of the use phase

# ENVIRONMENTAL PRODUCT DECLARATION



Laser Printer B3442dw

Printers and multi-functional printing units

According to ISO 14025

## Fossil Fuel Depletion Potential

	per 1000 pages including paper	per 1000 pages excluding paper	per printer lifetime including paper	per printer lifetime excluding paper
Printer	2.43E-02	2.43E-02	2.73E01	2.73E01
Lex mark use phase <LC>	4.47E-01	4.47E-01	5.02E02	5.02E02
Lex mark EoL phase <LC>	2.37E-04	2.37E-04	2.66E-01	2.66E-01

Table 9: Fossil fuel depletion dominance analysis [kg oil equiv]

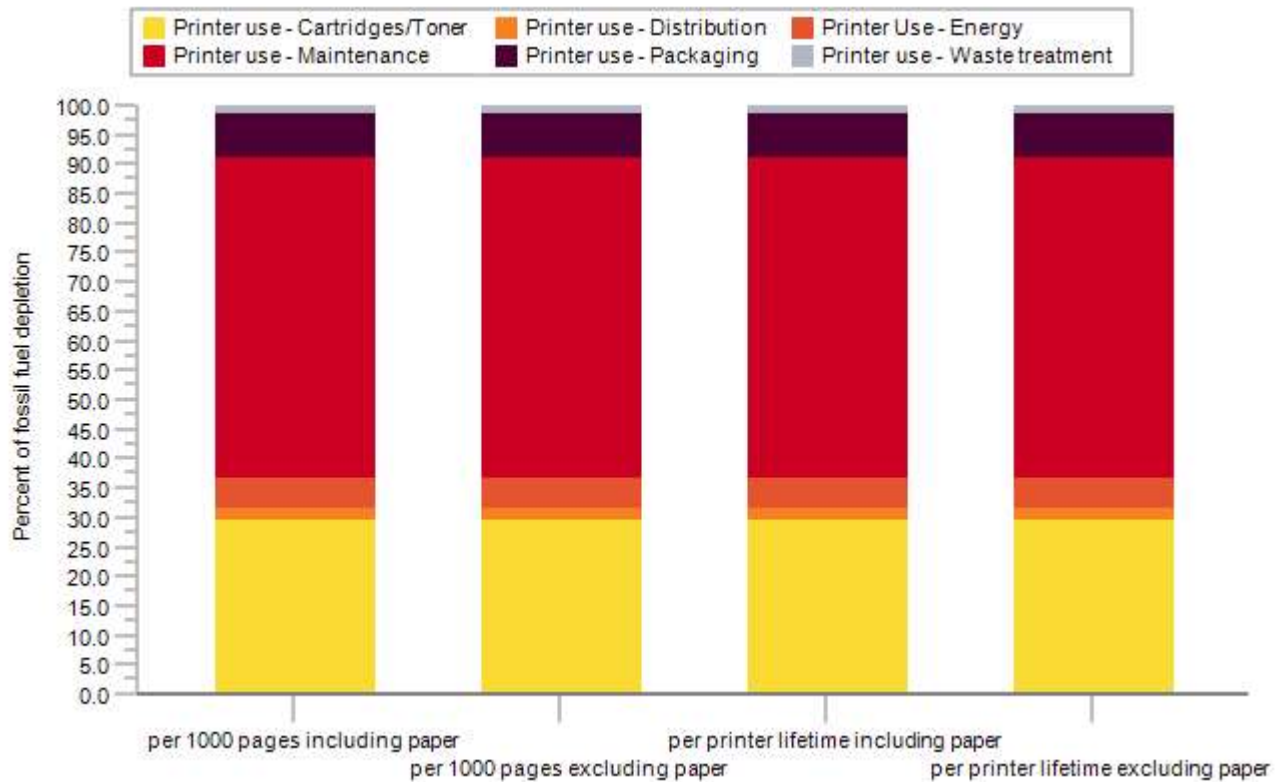


Figure 5: Fossil resource depletion dominance analysis of the use phase

# ENVIRONMENTAL PRODUCT DECLARATION



Laser Printer B3442dw  
Printers and multi-functional printing units

According to ISO 14025

## Mineral Resource Depletion Potential

	per 1000 pages including paper	per 1000 pages excluding paper	per printer lifetime including paper	per printer lifetime excluding paper
Printer	3.10E-03	3.10E-03	3.48E00	3.48E00
Lexmark use phase <LC>	3.26E-03	3.26E-03	3.66E00	3.66E00
Lexmark EoL phase <LC>	4.07E-06	4.07E-06	4.57E-03	4.57E-03

Table 10: Mineral resource depletion dominance analysis [MJ surplus]

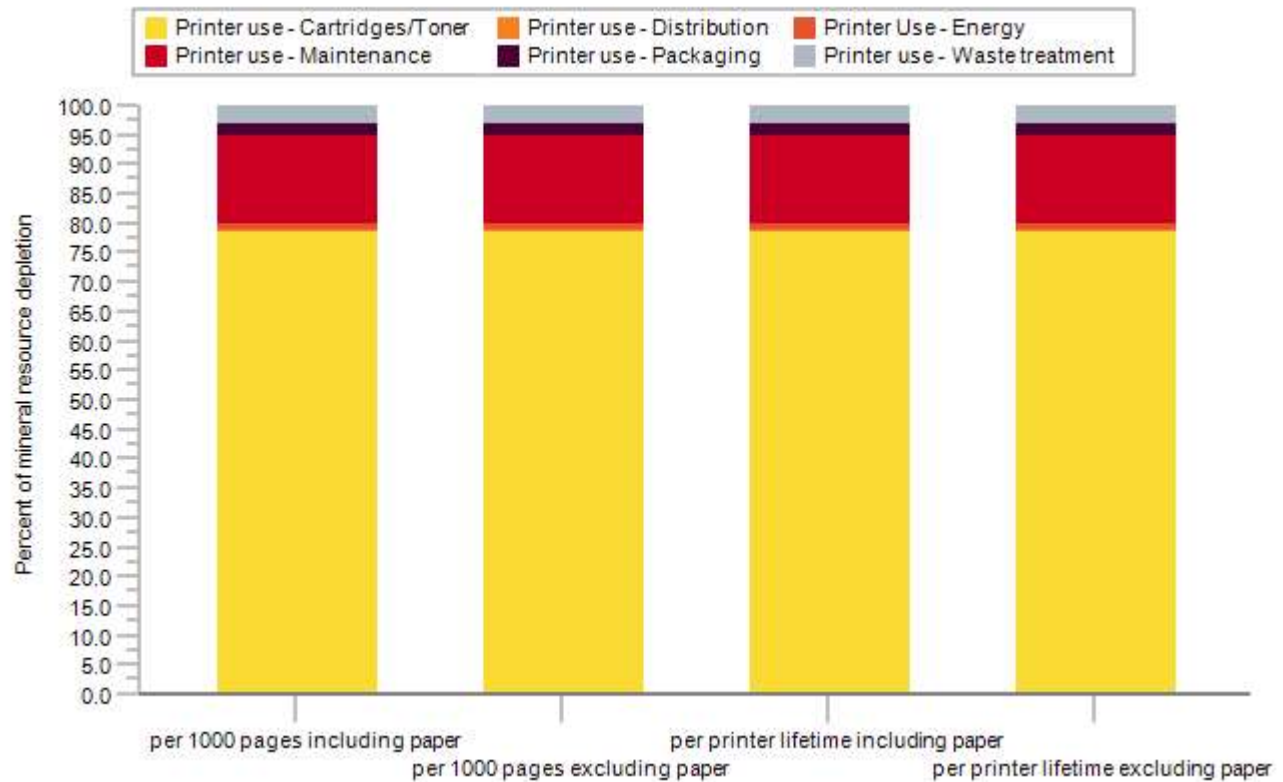


Figure 6: Mineral resource depletion dominance analysis of the use phase

# ENVIRONMENTAL PRODUCT DECLARATION



Laser Printer B3442dw

Printers and multi-functional printing units

According to ISO 14025

## Primary Energy Demand from Renewable and Non-renewable Resources

	per 1000 pages including paper	per 1000 pages excluding paper	per printer lifetime including paper	per printer lifetime excluding paper
Printer	1.14E00	1.14E00	1.28E03	1.28E03
Lexmark use phase <LC>	6.67E01	2.04E01	7.50E04	2.29E04
Lexmark EoL phase <LC>	1.07E-02	1.07E-02	1.21E01	1.21E01

Table 11: PED dominance analysis [MJ]

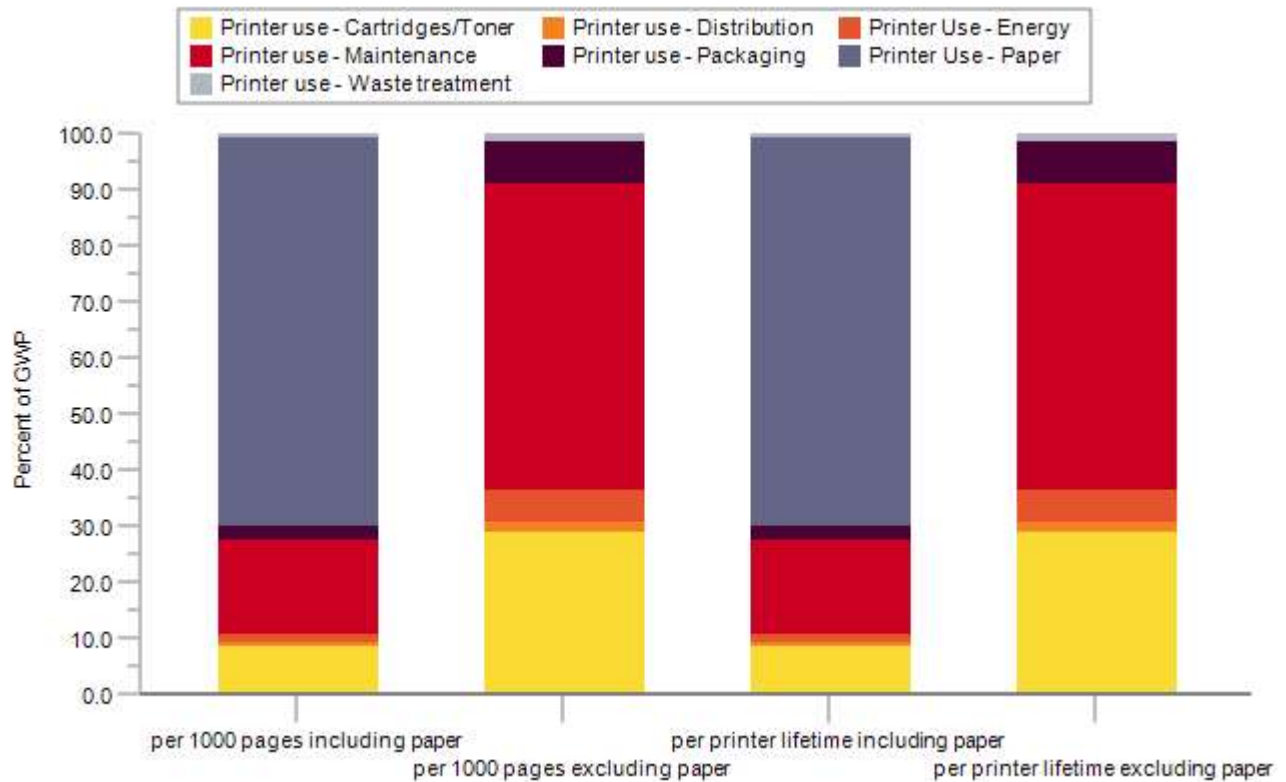


Figure 7: PED dominance analysis of the use phase



# ENVIRONMENTAL PRODUCT DECLARATION



Lexmark™

Laser Printer B3442dw

Printers and multi-functional printing units

According to ISO 14025

---

## Assumptions and Estimations

---

Assumptions and estimations follow the governing PCR on printing equipment. Full details are documented in the EPD's background report, which was provided for verification purposes alongside the EPD. The LCA results represent the specific printer model as sold in the North American market.

In line with the PCR, the model assumes a printer lifetime of five (5) years. The printer is modeled to print an average of 864 pages per day based on a maximum print speed of 42 images per minute. The printer further possesses an automatic mechanic duplexing feature.

Power consumption figures are based on Energy Star testing of the printer using the average job load described above. Consumables consumption is based on the market-average yield across all available cartridge capacities. In addition, market-average use of remanufactured cartridges is taken into account, as applicable.

Transportation distances to the end consumer are based on their points of origin and the population-weighted average distance to the 100 most populous cities in the continental US based on 2010 census data. The printer as well as replacement fuser kits and waste toner bottles are manufactured in China and shipped to the point of use from the distribution center near Memphis, TN, while the cartridges and the imaging unit are shipped from Ciudad Juarez, MX.

The LCI data for office paper is adopted from the uncoated, free sheet paper inventory developed by the American Forest & Paper Association (AF&PA). This paper dataset assumes that average office paper contains 4% recycled content. The mass of consumed paper is based on the US letter format and a surface weight of 75 g/m<sup>2</sup>. The AF&PA data includes paper production, transportation, and End-of-Life treatment (72% recycling, 23% landfill, 5% incineration).

The End-of-Life treatment for the printer is based on the assumption that 66.7 % of the printers are returned to Lexmark for recycling, while the remainder is disposed of through local waste streams, where the metal fractions are assumed to be recycled and the remainder landfilled. The EoL cartridges are assumed to go to remanufacturing, recycling, and landfill in equal shares.

In accordance with the cut-off methodology prescribed by the governing PCR, materials sent to End-of-Life recycling are considered to cross the system boundary without any further transformation. Only the impacts associated with waste transportation and disposal are included in the results.

---

## Description of Data and Period Under Consideration

---

All primary data is based on technical documentation and sales data accessed in 2020. All background data is taken from the GaBi 2020-9.2.1.68 Databases. No primary data is collected from the Original Equipment Manufacturer's manufacturing plant.

# ENVIRONMENTAL PRODUCT DECLARATION



Lexmark™

Laser Printer B3442dw

Printers and multi-functional printing units

According to ISO 14025

---

## Data Quality

---

Manufacturing data of printers and consumables is based on a combination of Bills of Material and teardown analyses and is considered to be of overall high quality with low uncertainty. Distribution from printer manufacturing to the end consumer is representative of logistical data from Lexmark and best estimates of US average shipping distances, and is of moderate quality and high uncertainty.

Printer power consumption represents measured power consumed during printer operation in accordance with the use scenario outlined in the reference PCR and is of high quality and moderate uncertainty; actual print loads may differ. Toner cartridge use is based on expected yields based on the ISO test standards for cartridge use, and is of high quality and low uncertainty. Replacement rate for consumable parts is based on part design specifications, and is of high quality and moderate uncertainty.

The disposition of the printer and consumables at End-of-Life is based on best-available information by the respective experts at Lexmark. This data is of average quality and moderate uncertainty.

## Background Data

---

All background datasets relevant to production, power generation, transportation, and material disposal were taken from the GaBi 2020-9.2.1.68 Databases.

The data used for office paper is based on the data developed for the American Forest & Paper Association (AF&PA) and is representative for average North American office paper production in 2010.

The additional use of third-party background data from industry associations (e.g., worldsteel) is documented in the background report. They represent the latest LCI data as available in the GaBi 2020-9.2.1.68 Databases.

## Allocation and Methodological Principles

---

No significant allocations have been considered for the production of the printer. Allocation of production or use impacts across the various functions of a multi-function system is not included (i.e., allocation of production impacts to the provision of scanning services) and the impacts from all life cycle stages are considered within the system boundaries for the printing system.

Treatment of recycled or resold material is not considered in the body of the EPD, in accordance with the cut-off methodology required by the governing PCR.

A description of all of the methodological decisions made in modeling the life cycle impacts of office paper, including descriptions of the approach to modeling carbon sequestration and paper recycling, are described in the American Forestry & Paper Association's LCA report on printing and writing papers.



# ENVIRONMENTAL PRODUCT DECLARATION



Laser Printer B3442dw

Printers and multi-functional printing units

According to ISO 14025

## Additional Environmental Information

As required by the governing PCR, the assessment of human toxicity and ecotoxicity shall be included in this additional information section. The following metrics, which are based on the scenario 'per printer lifetime including paper' can help identify toxicity hot spots, but decision-making should also consider an exposure assessment.

	USEtox - Ecotoxicity [CTUe]	USEtox - Human toxicity (cancer) [CTUh]	USEtox - Human toxicity (non-cancer) [CTUh]
Printer use - Cartridges/Toner	6.24E-01	1.57E-07	2.86E-09
Printer use - Distribution	1.54E-01	1.88E-10	5.21E-11
Printer Use - Energy	3.97E-02	3.70E-09	7.76E-11
Printer use - Maintenance	4.18E00	8.22E-09	2.95E-09
Printer use - Packaging	2.09E-01	1.44E-08	1.17E-07
Printer use - Waste treatment	8.78E-02	1.39E-09	1.40E-09

# ENVIRONMENTAL PRODUCT DECLARATION



Laser Printer B3442dw

Printers and multi-functional printing units

According to ISO 14025

## References and Standards

---

EPA (2013) ENERGY STAR Program Requirements for Imaging Equipment – Test Method (Rev. Jun-2013)  
[https://www.energystar.gov/sites/default/files/FINAL%20Version%202.0%20Imaging%20Equipment%20Program%20Requirements%20%28Rev%20Oct-2014%29\\_0.pdf](https://www.energystar.gov/sites/default/files/FINAL%20Version%202.0%20Imaging%20Equipment%20Program%20Requirements%20%28Rev%20Oct-2014%29_0.pdf)

ISO (2006a) ISO 14025: Environmental labels and declarations – Type III environmental declarations – Principles and procedures. International Organization for Standardization. Geneva.

ISO (2006b) ISO 14040: Environmental management - Life cycle assessment – Principles and framework. International Organization for Standardization. Geneva.

ISO (2006c) ISO 14044: Environmental management - Life cycle assessment – Requirements and guidelines. International Organization for Standardization. Geneva.

NCASI (2010) Life Cycle Assessment of North American Printing and Writing Paper Products – Final Report. Prepared for the American Forest and Paper Association (AF&PA) and the Forest Products Association of Canada (FPAC) by the National Council for Air and Stream Improvement, Inc. Research Triangle Park, NC

thinkstep (2018) GaBi ts Product Sustainability Software. thinkstep AG, Leinfelden-Echterdingen. <http://www.gabi-software.com>

ReCiPe (2016) *ReCiPe* methodology for Life Cycle Impact Assessment, version 1.1. Available at [www.lcia-recipe.net](http://www.lcia-recipe.net)

ULE (2018) Product Category Rules for preparing an environmental product declaration (EPD) for printers and multi-function printing units (v2.0). UL Environment. Washington, DC.

## ENVIRONMENTAL PRODUCT DECLARATION



Laser Printer B3442dw

Printers and multi-functional printing units

According to ISO 14025

---

### Contact Information

---



Lexmark<sup>TM</sup>

Lexmark International, Inc.  
740 W. New Circle Road  
Lexington, KY 40550  
Tel: +1-859-232-2000